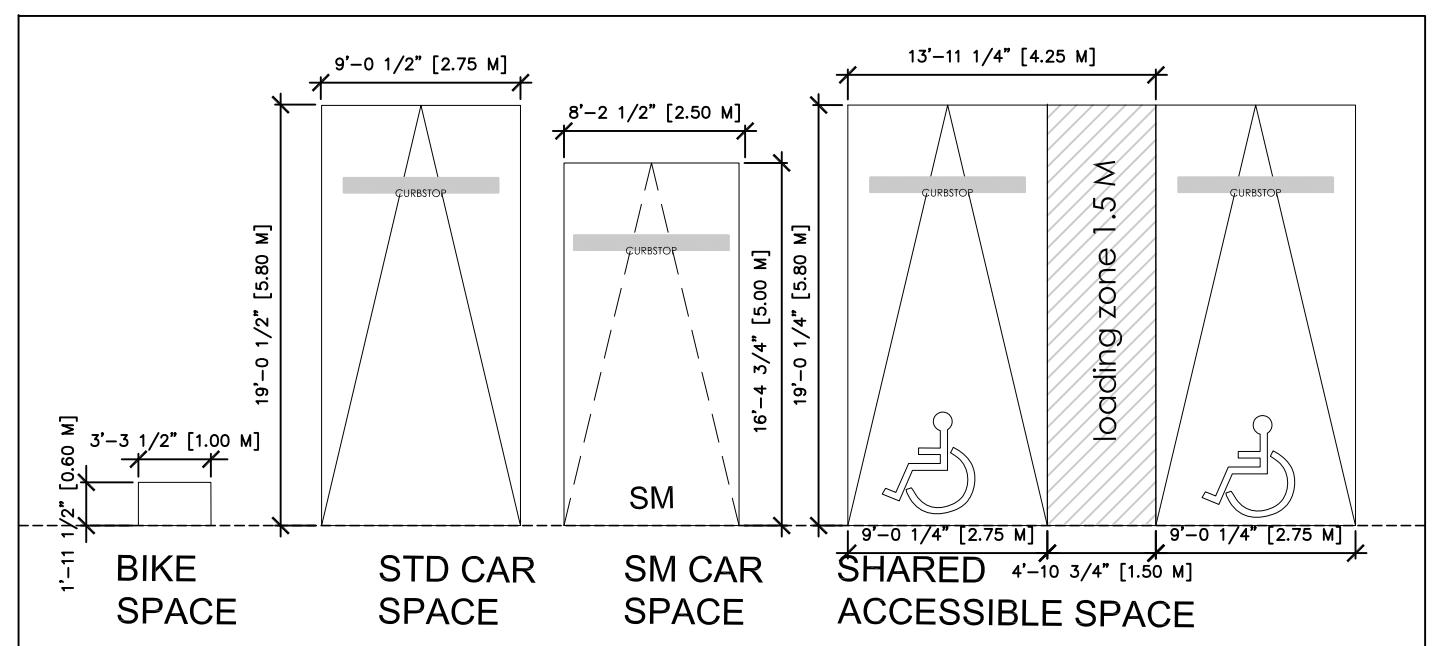
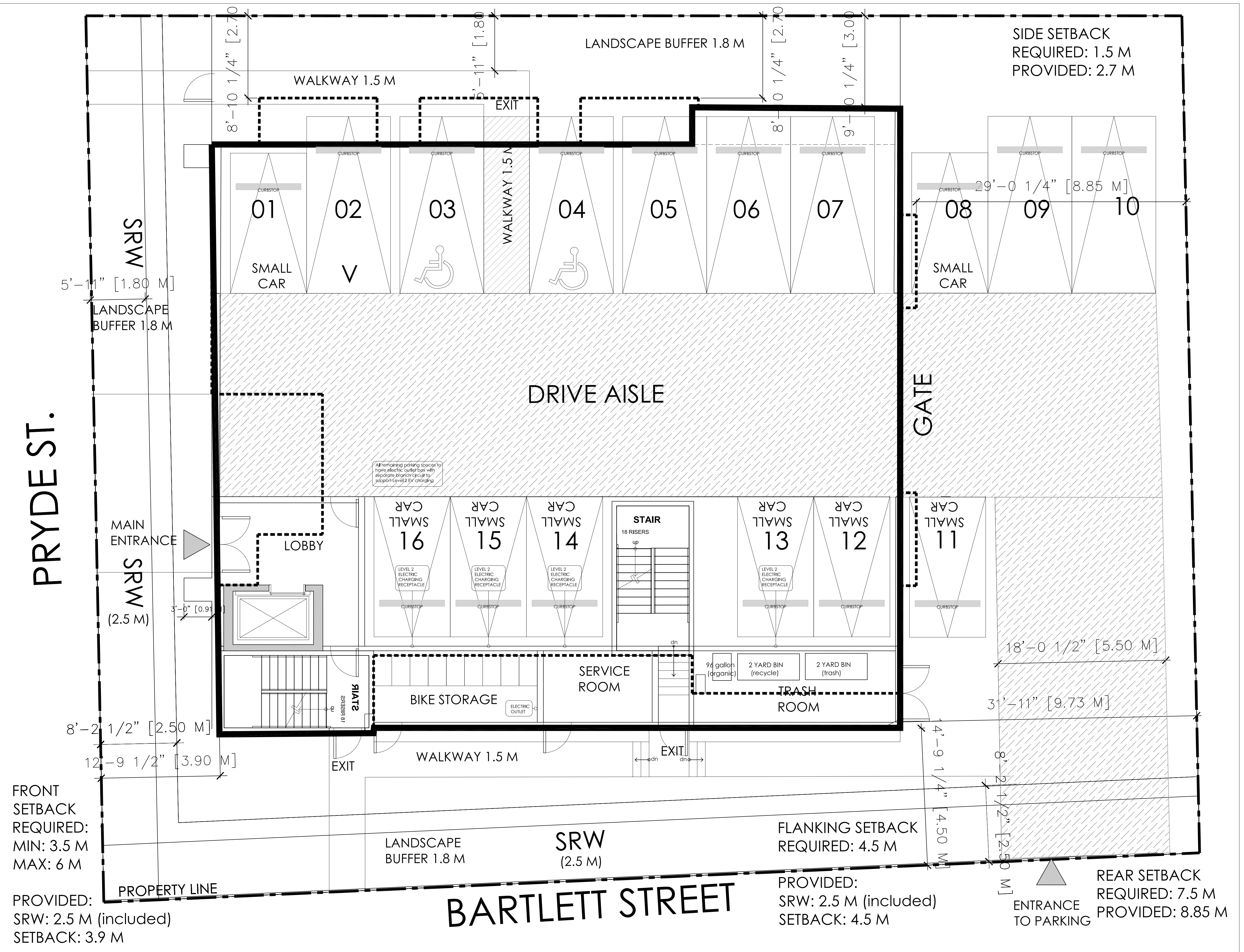


PRYDE ST.



DIMENSIONS OF CAR AND BIKE PARKING SPACES USED IN THIS PROJECT

*25% of the parking spaces to have shared access to a Level 2 Electric Vehicle Charge Receptacle or more efficient charger

*All remaining parking spaces to have shall be provided with an electrical outlet box wired with a separate branch circuit capable of supplying electricity to support the installation of a Level 2 Electric Vehicle Charge Receptacle

RECEIVED
DP1342
2024-APR-15
City of Nanaimo

JOYCE REID TROOST ARCHITECTURE
2515 GLENAYR DRIVE
NANAIMO, BC V9S 3R9

joyce@jrtarchitecture.com
250.714.8749
jrtarchitecture.com

THE DRAWINGS, DESIGN IDEAS AND FEATURES OF CONSTRUCTION DEPICTED HEREIN ARE THE EXCLUSIVE PROPERTY OF JOYCE REID TROOST ARCHITECT. ALL COMMON COPY AND PROPERTY RIGHTS ARE EXPRESSLY RESERVED. THEY ARE NOT TO BE REPRODUCED, COPIED, REPRODUCED OR USED FOR ANY PURPOSES NOR ARE THEY TO BE ASSIGNED TO A THIRD PARTY WITHOUT EXPRESS WRITTEN CONSENT. IN THE EVENT OF ANY UNAUTHORIZED USE OF THESE PLANS BY A THIRD PARTY, THE THIRD PARTY SHALL NOT HOLD JOYCE REID TROOST ARCHITECT RESPONSIBLE.

ARCH. STAMP

116 PRYDE MULTI FAMILY
NANAIMO, BC

CLIENT
BC 1392056

REV. DATE	NUMBER	DESCRIPTION
DEC 27, 2023	01	POST PRE APP DESIGN
JAN 17, 2024	02	TO CONSULTANTS
APRIL 9, 2024	03	DP

DATE OCT 11, 2023

SCALE

DRAWN BY JRT

SITE PLAN

A100